



Relative Age and Depositional Environment of The Limestone Unit of Karangsambung Formation in Jatibungkus Hill, Kebumen Geopark, Indonesia

Anis Kurniasih*, Annisa Puspa Wicitra, Nurakhmi Qadaryati, Wahyu Budhi Khorniawan, Hasnan Luthfi Dalimunthe, Reddy Setyawan, Anita Galih Ringga Jayanti

¹ Geological Engineering Department, Faculty of Engineering, Universitas Diponegoro, Indonesia

* Corresponding author : anis.kurniasih@live.undip.ac.id
Tel.: +62 821 353 406 02
Received: Oct 1, 2016; Accepted: Nov 20, 2016.
DOI: 10.24273/jgeet.2016.1.2.001

Abstract

The Jatibungkus Hill is an isolated karst hill and is one of the olistolith fragments in the Karangsambung Formation deposited as olistostrome deposits. This formation formed above the Luk-Ulo Mélange Complex, one of the geological heritage sites in the Kebumen Geopark. The presence of limestone as a fragment in the olistostrome deposits requires further investigation because its formation history is related to regional geological history. This study aims to determine the relative age and depositional environment of limestone in Jatibungkus Hill based on microfossil analysis through petrographic observations. Of the 39 rock samples obtained during field data collection, 15 rock samples were selected for petrographic analysis. The petrographic analysis is divided into two parts, namely descriptive methods and point counting as the basis for classifying carbonate rocks. Based on the classification results, reef facies analysis was conducted using facies zonation and standard microfacies (SMF) to obtain an overview of the limestone depositional environment. In addition, the types of large foraminifera fossils and algae were also used as a basis for determining the relative age. The lithology found in the research area consist of packstone, rudstone, grainstone, and crystalline limestone. The limestone depositional environment is located in SMF 4, SMF 5, and SMF 6 which are included into FZ 4 (Slope) on a restricted carbonate platform. This facies zone influenced by currents and waves between the storm base wave and the normal base wave. The petrographic analysis showing the domination of large bioclastic grain indicating that the deposition were under a high energy. The influence of waves is also reflected in the mixture of bioclast and lithoclast grains or high-density terrigenous clastics that are observed in most of the samples. This facies contains more quartz clastics and bioclast grains than carbonate mud as consistently observed in the identified samples. The association of large benthic foraminifera fossils and algae indicates that the limestone was formed in Zone Ta1 (Late Paleocene) characterized by the presence of *Discocyclusina* sp., *Ranikothalia* sp., *Nummulites* sp., *Miscelanea* sp., *Distichoplax biserialis*, and *Parachaetes* sp. It can be seen that the deposition of the limestone olistolith occurred after the initial subduction event which produced the mélange complex in Early Cretaceous.

Keywords: limestone, Karangsambung Formation, olistostrome, petrography, Kebumen Geopark

1. Introduction

The Kebumen Geopark is a geological heritage site within the Karangsambung-Karangbolong National Geopark (GNKK) area. The diverse rock outcrops provide evidence of subduction and collision between Sundaland and the East Java Microcontinent during the Early Cretaceous to Paleocene (Hall, 2012). The Luk-Ulo Mélange Complex is evidence of this subduction product, composed of a mixture of rocks from oceanic and continental plates. Overlying this formation are Paleogene sedimentary layers, namely the Karangsambung Formation and the Totogan Formation. The presence of distinctive fragments or boulders (olistoliths) in random layers is caused by gravity-driven sedimentation in an active tectonic basin (Asikin, 1974). These boulders and fragments consist of foraminiferal limestone and conglomerate, ranging in size from a few meters to hundreds of meters in length.

The complex geological history makes Karangsambung-Karangbolong an interesting location for geological research, so that quite a lot of research has been done in this area. Most of the previous research focused on the

characteristics and petrogenesis of Luk-Ulo metamorphic complex, including that conducted by Sucipta (2006), Harsolumakso et al. (2016), Pratama et al. (2017), Nurhayati (2018), and Isyqi and Anshori (2021). These studies took metamorphic rocks in the Luk Ulo mélange group as the main object for interpreting the tectonic history of the Karangsambung complex. Other researchs focusing on tectonic evolution are Isyqi et al. (2019), Anshori et al. (2019), and Nugroho et al. (2021) which uses a series of granitoid rocks as basis for reconstructing the tectonic origin of the exotic blocks. Along with the designation of Karangsambung-Karangbolong as a national geopark, research in the field of geodiversity in this area has also begun to be carried out, including by Fadlin et al. (2020), Anshori et al. (2021), and Anshori et al. (2023).

According to Hall (2012), the Jatibungkus Hill is an olistolith fragment within the Karangsambung Formation formed by gravity landslides. This process produces a mixed sedimentary rock characterized by oceanic and continental plates. The Jatibungkus Hill consists of coral limestone that have undergone karstification and formed several karst caves within them, including Langse Cave,

minerals are found present as clastic grains (Fig. 2a) and some others as diagenetic products. Contacts between grains in each sample tend to float and touched (point), as can be seen in Fig. 2b. Some mineral formations resulting from diagenesis appear to adapt to the shape of the bioclasts they replace.

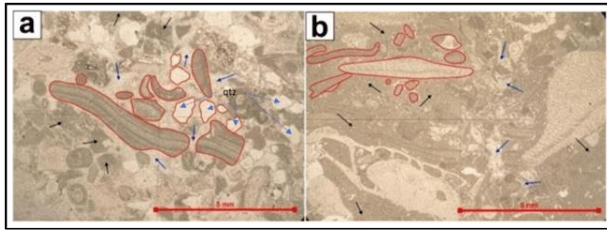


Fig. 2. Parallel nicol view in samples LANG-1C (a) and SIK-8 (b), it appears that the allochem has floating and point contacts, tends to float on carbonate cement (black arrows) and the cavities between grains are filled by cement (dark blue arrows).

3.1.2 Rudstone

Rudstone is represented by samples JTB-5, JTB-5+, LANG-8A, LANG-8B, and LANG-13, which are located close to each other. The microscopic appearance that can be observed is the appearance of dominantly large allochem containing bioclasts reaching more than 10%. The largest allochem dimension in this rock reaches 15 mm (Fig. 3d). The carbonate mud is limited and filled the space between the bioclasts. These samples share a common texture, containing >10% allochem with a size of >2 mm, thus classifying them as rudstone. In general, the allochem content present in the five samples consists of large foraminifera, algae, ooids, other bioclasts, and quartz clastic.

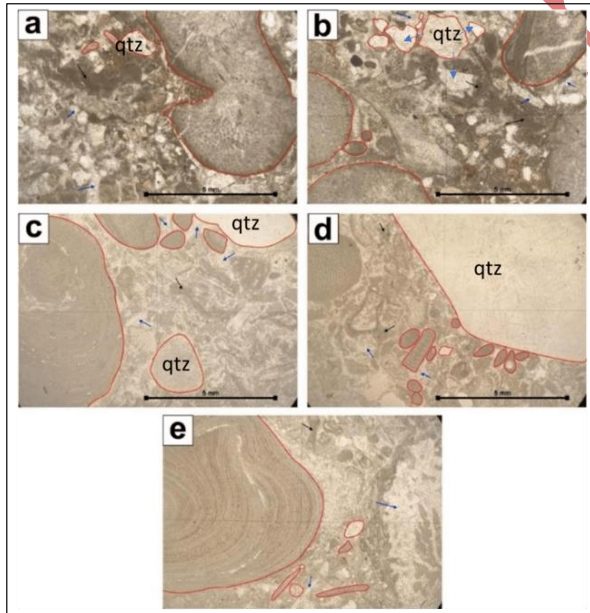


Fig. 3. Parallel nicol views in sections (a) JTB-5, (b) JTB-5+, (c) LANG-8A, (d) LANG-8B, (e) LANG-13 show that the allochem has floating and point contacts, tending to float on carbonate cement (dark blue arrows). In images (a) and (b) carbonate mud can still be seen with clotted distribution in certain fabrications (black arrows).

3.1.3 Grainstone

The lithological distribution of grainstone was found in SIK-2, SIK-6, and SIL-2, characterized by microscopic grain-supported and matrix-free fabrication. The allochem content in each rock reaches >90% (Fig. 4). Point counting analysis shows that the allochem composition in the three samples reaches >90%, thus identifying them as grainstone.

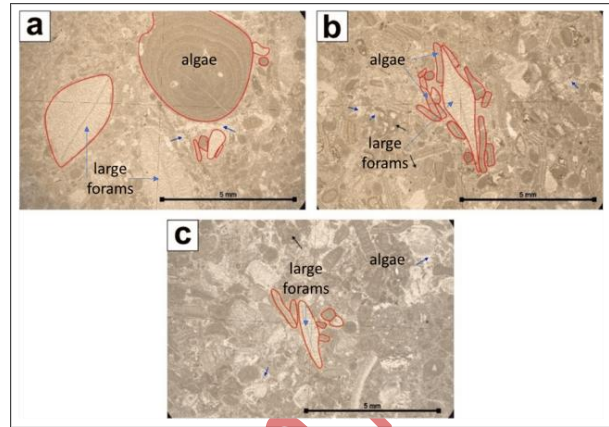


Fig. 4. Parallel nicol views in sections (a) SIK-2, (b) SIK-6, (c) SIL-2 showing grain-supported fabrication with point to concavo-convex contact types. As seen in the image, the composition is dominated by allochem measuring <5 mm. The black arrow indicates the matrix and the dark blue arrow indicates the cement.

3.1.4 Crystalline Limestone

This lithology can be found in JTB-3, JTB-4, JTB-6, JTB-8, and LANG-2. The formation process of this lithology is greatly influenced by diagenesis and karstification processes after the rock is exposed to the surface. On megascopic view, this appearance is difficult to distinguish and identify. In microscopic appearance, most to all depositional structures can no longer be observed (Fig. 5). However, some sections still show relict structures from the original depositional texture (Fig. 5c). The size of allochem grains that can still be identified ranges from <2 mm to >5 mm. The largest identified allochem has a size of 6 mm. Based on the unobservable depositional texture, the description of this rock is considered as crystalline limestone.

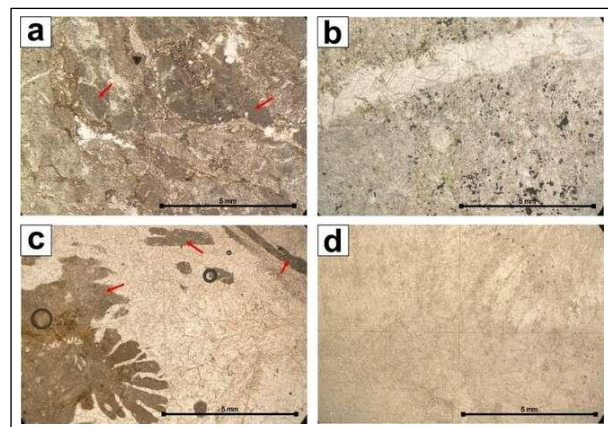


Fig. 5. Variation in the appearance of rock textures petrographically from (a) JTB-3, (b) JTB-4, (c) JTB-6, (d) LANG-2. The image above is a parallel nicol view. Micrite can be observed in (a) and (c) marked with red arrows.

Table 1. The relative composition and special features of each sample.

Sample Code	Relative Composition (%)				Special Features	Identification based on Dunham (1962) and Embry & Klovan (1971)
	Allochem	Orthochem	Cement	Pore		
JTB-3	3	51	45	1	The sample has undergone diagenesis and neomorphism processes.	Crystalline
JTB-4	0	0	91	9	The sample has undergone diagenesis and neomorphism processes.	Crystalline
JTB-5	56.72	23.66	18.82	0.54	The allochem consist of foraminifera, algae, quartz, ooid, pisoid	Rudstone
JTB-5+	71.51	4.03	24.19	0.27	The allochem consist of foraminifera, algae, quartz, ooid, pisoid	Rudstone
JTB-6	29	22	49	0	The sample has undergone diagenesis and neomorphism processes.	Crystalline
JTB-8	0	0	100	0	The sample has undergone diagenesis and neomorphism processes.	Crystalline
LANG-1C	53.23	5.65	41.13	0	Quartz clastics are very dominant among algal and foraminiferal bioclasts	Packstone
LANG-2	0	34	66	0	The sample has undergone diagenesis and neomorphism processes.	Crystalline
LANG-8A	46.77	13.44	39.78	0	Large quartz clasts are frequent among the bioclasts of foraminifera and algae.	Rudstone
LANG-8B	70.16	8.87	20.97	0	Large quartz clasts are frequent among the bioclasts of foraminifera, algae, and mollusc.	Rudstone
LANG-13	62.9	5.11	31.99	0	Large bioclast of foraminifera and algae are frequent	Rudstone
SIK-2	70.97	1.34	26.08	1.61	The allochem dominantly consist of foraminifera and algae; sparit fills the gaps between grains	Grainstone
SIK-6	83.33	6.08	8.99	0.55	The allochem dominantly consist of foraminifera and algae	Grainstone
SIK-8	44.35	30.38	24.46	0.81	The allochem consist of foraminifera, algae, molluscs, ooid, peloid; no quartz grains found	Packstone
SIL-2	73.12	1.08	25.27	0.54	The allochem consist of foraminifera, algae, molluscs, ooid, peloid	Grainstone

The facies and environmental analysis of carbonate rocks in this study used data from petrographic analysis. Of the 15 thin-section samples, 10 were selected, not belonging to the crystalline limestone type, with well-preserved depositional textures.

Based on the allochem and orthochem compositions in the rocks, the limestones of the Jatibungkus Hill are generally composed of bioclastic and clastic materials with a small amount of micrite. Bioclastic materials include algae, foraminifera, corals, and various shallow marine organisms. The type of algae that can be found mostly in all sections is the lithophylloid algae, namely *Distichoplax biserialis*, followed by geniculate coralline algae and *Solenoporacean* algae. Coralline algae are the main sediment producers in carbonate formation environments. *Miliolides* can be found in several rock samples, which characterizes the association of organisms that live in shallow and clear marine environments. Large foraminifera of the *Nummulites* type and red algae thrive well in the oligophotic zone (lower mesophotic) with sufficient light intensity but located slightly deeper.

From these conditions, it can be seen that reef development in the study area is caused by collapse and debris flow mechanisms, resulting in a mixture of organisms from the photic zone. This statement is supported by the presence of quartz clastic grains

commonly found in several rock samples. The exposure developing in the study area can likely be categorized as a rimmed shelf. Under rimmed platform conditions, the highest carbonate production intensity occurs on the outer and middle exposures, referred to as the subtidal carbonate factory (James, 1984). The standard microfacies and facies zones identified in this study are as follows:

a. SMF 4 (Microbreccia Bioclastic-Lithoclastic Packstone)

Thin sections that can be categorized into this microfacies are samples JTB-5, JTB-5+, LANG-1C, LANG-8A, LANG-8B, and LANG-13. Based on its texture, this type of microfacies is characterized by a massive or gradational structure with a medium to coarse bioclastic texture, poor sorting, and angular-subrounded roundness. The main constituent of this microfacies is characterized by reworked grains, composed of mixed fragments of both cemented bioclasts and lithoclasts, commonly found quartz or chert fragments, and other carbonate fragments. The carbonate mud content in this microfacies is not dominant due to the high abundance of allochem grains. The petrographic evidence on this can be seen at Fig. 3 which shows the abundance of quartz grains.

b. SMF 5 (Bioclastic Grainstone-Packstone Floatstone)

The rock sample that can be categorized into this microfacies is sample SIK-8. The main composition of the rock consists of bioclasts from organism's characteristic of the reef top and reef flank, commonly found filling fine sediment in the pore cavities. In this rock (SIK-8, Fig. 2b), the foraminifera species identified are *Discocyclusina* sp., *Ranikothalia* sp., and *Miscellanea* sp. The genus *Nummulites* is generally deposited in environments with strong sedimentary energy (Rahmawati, 2012). It can be interpreted that SMF 5 shows a carbonate rock formation environment caused by quite high sedimentary energy. The high sedimentary energy causes the breakdown of reef-origin material to be transported and deposited on the reef slope. This facies is located on the front of the reef slope or reef flank.

c. SMF 6 (Reef Rudstone)

Rock sections categorized as this microfacies include samples SIK-2, SIK-6, and SIL-2. These rock fossils are dominated by algae, followed by large foraminifera. In general, this microfacies indicates a depositional process that occurred at the front of a reef slope that progressed seaward. This microfacies is characterized by the presence of large bioclasts (Fig. 4) as markers of the reef top and reef flank, and the absence of carbonate mud in the rocks. The high bioclast content in the rocks is influenced by high depositional energy, as it was formed by debris flow mechanisms resulting from erosion of the reef top and reef flank (Shima, 2014). The presence of the genus *Discocyclusina* indicates that the carbonate formation environment was influenced by varying hydrodynamic energy (Rahmawati, 2012).

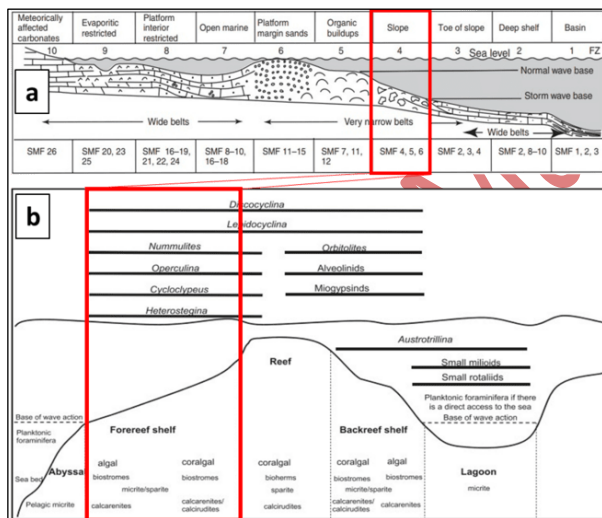


Fig. 6. (a) The study area is included in the FZ 4 (slope) according to the facies zone and SMF model on a restricted carbonate platform by Wilson (1994), shown by the red box; (b) Distribution of large benthic foraminifera on the Tethys carbonate exposure in general (Boudaughier-Fadel, 2018). The study area is located in the red box.

Based on the identification of Standard Microfacies (SMF) above, the association of Facies Zone (FZ) 4 is obtained, namely slope which is located on a restricted carbonate platform (rimmed platform setting) (Figure 6a). This facies is equivalent to a fore slope or fore reef according to the limestone depositional environment by James (1984). Wilson (1975) described this area as a facies characterized by fine to coarse grained rocks accompanied by breccia and exotic blocks, deposited on the edge of the shelf towards the sea to the end of the shelf (<200 meters)

with a slope of 5-90°, possibly there is a collapse of carbonate rocks previously originating from FZ 5 (the shelf edge reef). FZ 4 is still influenced by currents and waves because it is located between the storm base wave and the normal base wave. This can be seen by the dominantly large size of bioclastic grain (SIK-2, SIK-6, and SIL-2) showing that the deposition of the grains were under a high energy. The influence of waves is also reflected in the mixture of bioclast and lithoclast grains or high-density terrigenous clastics that are deposited within this rock, as can be seen in samples JTB-5, JTB-5+, LANG-1C, LANG-8A, LANG-8B, and LANG-13 (Fig. 3). Therefore, this facies contains more quartz clastics and bioclast grains than carbonate mud as consistently observed in the identified samples. The change in rock component type, initially dominated by quartz clastics, then by foraminifera, and then by algae, is interpreted as an environmental change trend that moves closer to the reef core, but remains on the slope of a carbonate shelf (Fig. 6b).

3.1.2. Relative Age Analysis

The determination of the age of the rocks in this study uses the age range association of large benthic foraminifera fossils and algae based on the Tertiary Letter Stages classification by Lunt & Allan (2004). The description of the index fossils found in the limestone in the Jatipakang Hill Complex is as follows.

a. *Discocyclusina* sp.

Discocyclusina belongs to the Orthophragminidae family (Fig. 7a), that lived in shallow marine environments from the Paleocene to the Late Eocene (Özcan et al., 2022).

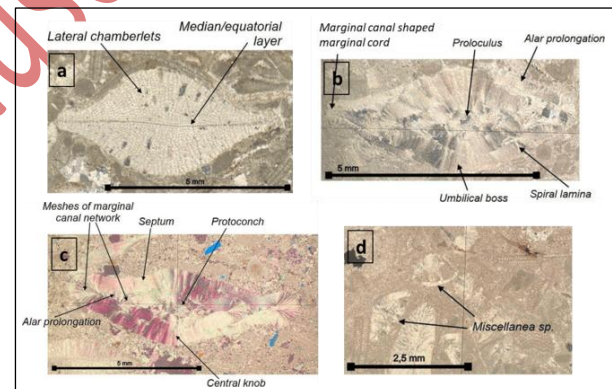


Fig. 7. (a) Axial section morphology of *Discocyclusina* (parallel section, not cutting the embryonic chamber); (b) Axial section morphology of *Nummulites* in a thin section of limestone sample SIL-2; (c) Axial section morphology of *Ranikothalia* sp. in a thin section of sample LANG-13; (d) Appearance of *Miscellanea* sp. in a thin section (crossed nicol appearance) of limestone sample SIK-8.

b. *Nummulites* sp.

Nummulites belong to the order Rotaliida, a large family of Nummulitoidea (Fig. 7b) that lived in the Late Paleocene in shallow marine environments.

c. *Ranikothalia* sp.

Ranikothalia Caudri, 1944, also known as *Nummulites nuttali* Davies, 1927, is a species of the Nummulitidae family that is a marker of Late Paleocene age (Fig. 7c).

d. *Miscellanea* sp.

Miscellanea Pfender, 1935 or *Nummulites miscella* d'Archiac and Haime, 1835 is a large foraminifera from the Miscellaneidae family. *Miscellanea* lived during the Paleocene (Boudaughier-Fadel, 2018). The *Miscellanea* individuals found in the rock sections of this study were limited to vertical parallel sections (Fig. 7d) with sections

that were less able to show every part of the morphology, making their morphological appearance difficult to identify. This limitation results in uncertainty regarding the identity of larger foraminifera fossils, considering that morphological observations of larger foraminifera require identification of horizontal and vertical sections.

e. *Distichoplax biserialis*

Distichoplax biserialis (Dietrich, 1927) is a species of red algae belonging to the subfamily Lithophylloideae. This algal species is commonly used to date Late Paleocene (Thanetian) (Fig. 8a). The abundance of *Distichoplax biserialis* was generally accompanied by the presence of geniculate coralline algae, non-geniculate *Sporolithon*, and large benthic foraminifera such as *Orthophragminida* before its eventual extinction due to the Paleocene-Eocene Thermal Maximum (PETM) and Larger Foraminiferal Turnover (LFT) (Sarkar, 2018).

f. *Parachaetetes* sp.

Parachaetetes is a genus of red Solenoporacean algae (Fig. 8b) that is a major reef builder in carbonate shelf environments.

The association of large foraminiferal fossils and identified algae indicates that the limestone formed in Zone Ta1 or equivalent Late Paleocene biostratigraphic units (Table 2) based on the occurrence of index fossils such as *Ranikothalia* sp., *Miscellanea* sp., algae *Distichoplax biserialis*, and algae *Parachaetetes* sp.

Table 2. Interpretation of relative ages based on the association of large foraminiferal fossils (indicated by red boxes)

	Late Paleocene	Early Eocene	Middle Eocene	Late Eocene	Early Oligocene	
Index Fossil of the Indo-Pacific region	Ta1	Ta2	Ta3	Tb	Tc	Td
<i>Discocyclus</i>						
<i>Ranikothalia</i>						
<i>Nummulites</i> (radial/sigmoid)						
<i>Miscellanea</i>						
<i>Distichoplax biserialis</i>						
<i>Parachaetetes</i>						

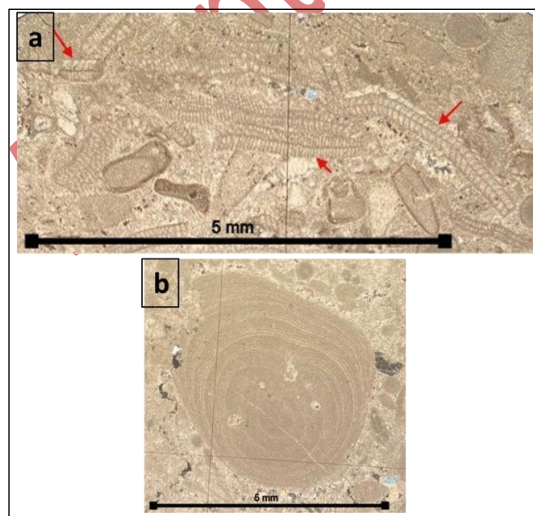


Fig. 8. (a) Concentration of *Distichoplax biserialis* in limestone sample SIK-6 (red arrow); (b) Appearance of algae *Parachaetetes* sp. in thin section (crossed nicol view) of limestone sample SIK-2.

The results of this research analysis show that the limestone olistolith of Jatibungkus Hill were deposited in a carbonate slope environment during Late Paleocene. Hall (2012) mentioned that the Indo-Australian oceanic plate has been subducting beneath the Eurasian continental plate since the Early Cretaceous resulting in the formation of Karangsambung accretionary-collisional complex. Therefore, it can be seen that the deposition of the limestone olistolith occurred after the initial subduction event which produced the mélange complex. The termination of subduction and uplift of the Luk Ulo Mélange Complex happened due to the reduction in subduction velocity resulting in no fossils of Early Paleocene rocks (Asikin, 1994). During this period carbonate began to form, as explained by Putra and Praptisih (2020) which stated that in Middle Paleocene, a shallow marine to deep marine depositional environment developed in this area, ideal for reef development. Reefs began to dominate deep to shallow marine areas on a limited carbonate shelf. These conditions were also supported by a global warming climate in the Late Paleocene and the rapid resurgence of larger foraminifera following the Late Cretaceous mass extinction (Boudaughier-Fadel, 2018).

In Late Paleocene, limestone was formed, currently exposed in the study area, the Jatibungkus Hill. It is known that the carbonate exposure continued to develop until the Middle Eocene (Lunt & Allan, 2004). This statement is supported by the presence of Early Eocene limestone olistoliths within mudstones located in the Sana River, which is only a few hundred meters from the Jatibungkus Hill. Evidence of the presence of Middle Eocene planktonic foraminifera is also common around the study area, indicating that the carbonate formation environment in the study area continued to develop until the Middle Eocene (Putra & Praptisih, 2020).

It should be emphasized that the result of relative age interpretation in this study refer to the age of limestone olistolith that are fragments within the Karangsambung Formation. According to Asikin (1974), the Karangsambung Formation itself was formed in the Middle Eocene – Oligocene. The presence of large sizes olistolith can be explained by landslide mechanisms, slumps, or turbidite sedimentation due to gravity transport in an accretionary tectonic environment (Harsolumakso & Noeradi, 1996). Therefore, it can be interpreted that the limestone olistolith of Jatibungkus was mixed with other olistoliths during the depositional of the Karangsambung Formation.

7. Conclusions

Based on the analysis of the association of large benthic foraminifera fossils and algae, it was concluded that the limestone in the Jatibungkus Hill was formed in the biostratigraphic unit of Zone Ta1 or equivalent to the Late Paleocene, characterized by the presence of characteristic fossils namely *Discocyclus* sp., *Ranikothalia* sp., *Nummulites* sp., *Miscellanea* sp., *Distichoplax biserialis*, and *Parachaetetes* sp. The limestone unit was formed in a slope area in a limited carbonate exposure environment, this was obtained based on the analysis of standard microfacies included in SMF 4, 5, and 6 which are part of the rimmed platform setting facies zone (FZ 4).

This research has limitations, especially in the identification stage of index fossils, which requires an ideal section to reveal the key morphology for identification, but this is not always achieved considering that the position of fossil grains in the rock is not uniform. Eventhough microfacies analysis is a powerful tool for determining the

depositional environment of limestone, it has several major limitations such as diagenetic alteration which often destroy the original features making it difficult to determine the original microfacies. In addition, the certain microfacies type can be formed in several environments creating ambiguity in interpretation.

Despite of these limitations, this study contributes to clarifying the position of the Jatibungkus limestone as an olistolith within the Karangsambung Formation. The age analysis of the Karangsambung Formation itself needs to be further investigated by analyzing its matrix samples, although this can be difficult due to the potential for olistolith whose lithological characteristics resemble the matrix, which could potentially lead to misinterpretation.

Acknowledgements

The authors thank the Faculty of Engineering, Diponegoro University, for its financial support during field data collection and laboratory analysis. We especially appreciate Binti Alfiani, Yoel Krisnanda, Tsalis, and Nafis for their assistance with field data collection in Karangsambung.

References

- Adhari, M.R. & Hidayat, R., 2023. A geological overview of the limestone members of the Woyla Group of Sumatra, Indonesia. *Journal of Geoscience, Engineering, Environment, and Technology*, 8, 3, 189 – 195. DOI: 10.25299/jgeet.2023.8.3.12190
- Amin, A. F., 2017. Analisis Struktur Geologi pada Antiklin Karangsambung, Kebumen, Jawa Tengah. (thesis).
- Anshori, C., Godang, S., Hastria, D. & Isyqi, 2019. Protolith oceanic island arc dari granitoid tipe M dan I di Karangsambung, Kebumen, Jawa Tengah. *Jurnal Geologi dan Sumberdaya Mineral*, 20, 4, 249 – 262. DOI: <http://dx.doi.org/10.33332/jgsm.v20.4.249-262p>
- Anshori, C., Warmada, I.W., Setiawan, N.I. & Yogaswara, H., 2021. Geomorphosite assessment at North Karangsambung-Karangbolong Geopark Kebumen, as tools of geotourism development. *Journal of Geoscience, Engineering, Environment, and Technologies*, 6, 3, 164 – 171. DOI: 10.25299/jgeet.2021.6.3.6753
- Anshori, C., Warmada, I.W., Setiawan, N.I. & Yogaswara, H., 2023. Geospatial analysis of the distribution of the Megalithic to colonial features at the Karangsambung-Karangbolong National Geopark, Kebumen, Indonesia and its surrounding area. *International Journal of Geoheritage and Parks*, 11, 407 – 432. DOI: <https://doi.org/10.1016/j.ijgeop.2023.06.002>
- Asikin, S., 1974. Evolusi Geologi Jawa Tengah Berdasarkan Teori Tektonik Dunia yang Baru. (dissertation).
- Boudaughar-Fadel, M. K., 2018. Evolution and Geological Significance of Larger Benthic Foraminifera. University College London Press, London.
- Djunaedi, M.T. & Taufiq, M., 2010. The larger foraminifera from the bottom of Wonocolo Formation, North East Java Basin. *Proceedings PIT IAGI Lombok 2010 The 39th IAGI Annual Convention and Exhibition*.
- Dunham, R. J., 1962. Classification of carbonate rocks according to depositional textures. In: *Classification of Carbonate Rocks — A Symposium* ed. by Ham, William E. AAPG Memoir, 1. Tulsa, Oklahoma, pp. 108-121.
- Embry, A.F., & Klovan, J.E., 1971. A late Devonian reef tract on northeastern Banks Island, NWT. *Bulletin of Canadian Petroleum Geology*, 19(4), 730-781. DOI: <https://doi.org/10.35767/gscpgbull.19.4.730>
- Fadlin, Waluyo, G., Iwan, Yp. Ariyanti, N., Nurwantari, N.A., 2020. Geosite assessment at the southern part of Karangbolong Dome: New insight to geotourism potential in Kebumen, Central Java, Indonesia. *Journal of Geoscience, Engineering, Environment, and Technology*, 5, 1, 8 – 18. DOI: 10.25299/jgeet.2020.5.1.2874
- Hall, R., 2012. Late Jurassic–Cenozoic reconstructions of the Indonesian region and the Indian Ocean. *Tectonophysics*, 570, 1–41. DOI: <https://doi.org/10.1016/j.tecto.2012.04.021>
- Harsolumakso, A. H., & Noeradi, D., 1996. Deformasi pada Formasi Karangsambung, di daerah Luk Ulo, Kebumen, Jawa Tengah. *Buletin Geologi*, 26(1), 45–54.
- Harsolumakso, A.H., Sapiie, B., Tuakia, Z., & Yudha, R.I., 2016. Luk Ulo Melange Complex, Central Java, Indonesia; Characteristics, origin and tectonic significance. *Poster on Conference: Asia Oceania Geoscience Society*. DOI: 10.13140/RG.2.2.14457.26728
- Isyqi, Ansori, C., Hastria, D., Wardhani, F.A., Al' Afif, M. Hidayat, E. & Puswanto, E., 2019. Petrologi dan geokimia batuan dasit Komplek Mélange Luk Ulo. *Jurnal Riset Geologi dan Pertambangan*, 29, 1, 27-41. DOI: 10.14203/risetgeotam2019.v29.968
- Isyqi & Anshori, C., 2021. Petrography and geochemistry preliminary study of Pucangan Serpentinite Geosite Karangsambung-Karangbolong Geopark Central Java, Indonesia. *IOP Conf. Series: Earth and Environmental Science*, 851, 012027. DOI:10.1088/1755-1315/851/1/012027
- James, N. P., 1984. Reefs in facies models. (Ed. R.G.Walker), *Geological Association of Canada*, 229 – 244.
- Khorniawan, W.B., Jayanti, A.G.R. & Caesario, D., 2024. Quantitative analysis of thin section using frequency measurement (point counting), a case study on limestone of the Rajamandala Formation, Cikamuning, West Java, Indonesia. *Journal of Geoscience, Engineering, and Technology*, 9, 3, 245 – 252. DOI: 10.25299/jgeet.2024.9.3.16489
- Lunt, P., & Allan, T., 2004. A history and application of larger foraminifera in Indonesian biostratigraphy, calibrated to isotopic dating. A summary of the subject for the 2004 GRDC workshop on micropalaeontology by GRDC Museum Workshop on Micropaleontology.
- Nisa, F.A., Fauzielly, L., Jurnaliah, L. & Winantris, 2023. Penentuan umur relatif batuan menggunakan foraminifera bentonik besar di daerah Sepaku, Kabupaten Penajam Paser Utara, Kalimantan Timur. *Padjadjaran Geoscience Journal*, 7, 4, 1529 – 1535.
- Nugroho, K.S.A., Setiawan, I. & Winarno, T., 2021. Comparison of granitoid characteristics West Kalimantan and Karangsambung based on mineralogical and geochemical aspects. *Journal of Geoscience, engineering, environment, and Technology*, 6, 3, 152 – 163. DOI: 10.25299/jgeet.2021.6.3.7417
- Nurhayati, 2018. Studi petrologi dan karakteristik grafit di Komplek Luk Ulo, Karangsambung, Kebumen dan Perbukitan Jiwo, Bayat, Klaten Provinsi Jawa Tengah. (thesis)
- Özcan, E., Yücel, A.O., Erkizan, L.S., Gültekin, M.N., Kayğılı, S.,

- Yurtsever, S., 2022. Atlas of Tethan Orthophragmines. *Mediterranean Geoscience Reviews*, 4, 3 – 213. DOI: <https://doi.org/10.1007/s42990-022-00072-1>
- Pratama, E., Hutabarat, J. & Mulyo, A., 2017. Karakteristik batuan blok asing (exotic block) di daerah Sadang Kulon Kompleks Melange Luk Ulo Karangsembang. *Padjadjaran Geoscience Journal*, 1, 1, 47 – 58.
- Putra, P. S., & Praptisih, P., 2020. Umur Relatif Batuan Asal Sedimen Oligostrom Formasi Karangsembang, Kebumen, Jawa Tengah. *Jurnal Geologi dan Sumberdaya Mineral*, 21(1), 25. <https://doi.org/10.33332/jgsm.geologi.v21i1.498>
- Rahmawati, D., 2012. Studi Biostratigrafi Foraminifera Besar pada Batugamping Formasi Wungkal-Gamping Jalur Padasan-Gunung Gajah, Kecamatan Bayat, Kabupaten Klaten, Propinsi Jawa Tengah. (thesis)
- Sarkar, S., 2018. The enigmatic Palaeocene-Eocene coralline *Distichoplax*: Approaching the structural complexities, ecological affinities and extinction hypotheses. *Marine Micropaleontology*, 139. <https://doi.org/10.1016/j.marmicro.2017.12.001>
- Sucipta, I.G.B.E., 2006. Petrologi batuan metamorf tekanan tinggi di daerah Karangsembang, Kebumen, Jawa Tengah. *Buletin Geologi*, 38, 2.
- Vlerk, I. M., & Umbgrove, J. H. F., 1927. Tertiaire gidsforaminiferen van Nederlandsch Oost-Indië. *Dienst van den Mijnbouw in Nederlandsch-Indië. Bandung*
- Wardhani, F.A., Puswanto, E., Al Afif, M., 2020. The potency of Jatibungkus Geosite as one of geotourism destination of Karangsembang – Karangbolong National Geopark. *The 4th International Conference on Regional Development (ICRD) 2019: Rural Development in Urban Age: Do Rural-Urban Linkages Matter?* <https://proceedings.undip.ac.id/index.php/icrd/article/view/173/33>
- Wilson, J. L., 1975. The stratigraphy of carbonate deposits. In: *Carbonate Facies in Geologic History*. Springer Study Edition. Springer, New York. 20–55. https://doi.org/10.1007/978-1-4612-6383-8_2



© 2026 Journal of Geoscience, Engineering, Environment and Technology. All rights reserved. This is an open access article distributed under the terms of the CC BY-SA License (<http://creativecommons.org/licenses/by-sa/4.0/>).

Accepted Manuscript in PROGRESS