

RESEARCH ARTICLE

Slope Stability Analysis Using the Rock Structure Rating (RSR) Method And Atterberg Limit at Riau - West Sumatra Cross road Km 165 Harau Subdistrict, Lima puluh Kota Regency, West Sumatra Province

Tessema Ogie Damares^{1,*}, Fadlan Irsyad Ramadhan¹, Leroy Otieno Kai¹, Chaka Diallo¹

¹ Geology Department, Botswana International University Of Science And Technology, Palapye, Botswana

* Corresponding author : damarestess88@gmail.com
Tel.:+267-22-167-1372;
Received: Dec 21, 2023; Accepted: May 22, 2024.
DOI: 10.25299/jgeet.2024.9.2.15499

Abstract

Stability on the slope was considered important for the safety of people who pass through the highway. Failure of slopes on highways can cause losses especially roads had an important role in community activities. The research was located on the Riau – West Sumatra Km 165. The purpose of this research was to find out treatment or mitigation that can be given to the research slope and know the soil classification based on the analysis Atterberg Limit. The research slope was divided into 3 parts using analytical Rock Structure Rating (RSR) method based on different slope conditions. And 1 part of the slope that has become soil using the analytical method Atterberg Limit. Treatment or mitigation that can be given to the research slope, namely the use of rock shopandshotcrete based on the RSR diagram and the use of rock embankments to resist landslides.

Keywords: Rock Structure Rating (RSR), Atterberg Limits, Slope Stability, Landslide

1. Introduction

A slope is a surface that connects higher ground with a lower ground surface, and slope stability is closely related to landslides or ground movements which are the natural process of transferring soil mass from high places to lower places (Korach and Sarajar, 2014). This movement of the ground can occur due to changes in the carrying capacity of the soil and will stop after reaching a new balance. Failure of a slope can cause landslides, which generally occur when the soil is no longer able to support the weight of the soil layer above it because there is an additional load on the surface of the slope and a decrease in the binding capacity of the soil grains.

Other factors that affect slope stability include internal factors and external factors. Internal factors occur from the body of the slope itself, mainly due to the role of water in the body of the slope. While external factors occur outside the slopes, namely the influence of climate or weather, weathering and erosion, subsidence and ground movements, vibrations or earthquakes, and the result of human activities that carry out uncontrolled mining of soil, sand, or rock, causing an imbalance of the load at the top. slope with the load at the foot of the slope.

Against this background, research on slope stability is very important to provide information about areas or locations that have the potential for ground motion with existing natural features thus various preventive measures can be taken before ground motion becomes an unexpected disaster. The slopes that are the object of research are on the Riau – West Sumatra Km 165 causeway. This research uses the Rock Structure Rating (RSR) method and technical analysis Atterberg Limits.

2. Study Area

Administratively, the research location is located in Harau

District, Fifty City District, West Sumatra Province. Meanwhile, geographically it is at coordinates 0° 05' 00.7" LS and 100° 41' 55.6" E. The research was conducted on one of the slopes which is on the edge of the Riau - West Sumatra Km 165 causeway.

2.1 Regional Geology

Regional Geology in Fifty Cities District is in a series of hills known as "Bukit Barisan" and is part of the "Bukit Barisan" Volcanic Arcplate tectonic order or framework in the Sumatra area. The research location is included in the Brani formation based on the Sheet Solok geological map (P.H Silitonga & Kastowo, 1995) which is Eocene – Oligocene in age. The Brani Formation has a finger relationship with the Sangkarewang Formation (P.H Silitonga & Kastowo, 1995). The lithology of this formation is in the form of conglomerate with sandstone inserts and has a depositional environment that is alluvial fans.

The regional geological structure of the study area is strongly influenced by the geological setting of Sumatra. From the geological structure, this area is included in the Payakumbuh basin area, which has fault or fault structures in the form of normal fault structures and shear faults which are reflections of basement form area Block Faulting System (Bunk Fault System). In general, the direction of the structure in the Fifty Cities Regency area is Northwest-Southeast. In Pre-Tertiary rocks, in addition to these directions, there are Northeast-Southwest and North-South directions. The folds in Tertiary rocks generally have a slope of no more than 20°, whereas those in Pre-Tertiary rocks are sharper. The main faults in this area are part of the Northwest-Southeast trending Sumatran fault and are in the form of right-sided shear faults

associated with the formation of volcanoes, besides that there are also those trending Northeast-Southwest and North-South.

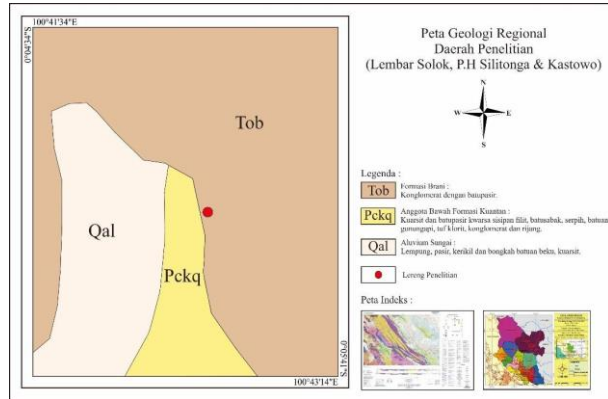


Fig 1. Regional Geological Map of Research Area

2.2 History of Landslides on Causeway of Riau - West Sumatra

The following is some history of landslides that have occurred on the Riau - West Sumatra highway:

Table 1. History of Landslides on Jalan Lintas Riau - West Sumatra

Occurrence	Year	Location
Landslide	2016	
	28/1/2016	Km 79 Dusun Rantau Berangin, Merangin Village
	13/11/2016	Km 77, 80, 82 Merangin Village
Landslide	2017	
	2/3/2017	Sub District Kapur IX, Regency Lima Puluh Kota
	15/3/2017	Sub District Pangkalan, Regency Lima Puluh Kota
Landslide	2018	
	19/4/2018	Km 77 Merangin Village
	23/10/2018	Causeway of Riau – West Sumatera, Hamlet Rantau Berangin, Merangin Village
	15/11/2018	Km 81 PLTA Koto Panjang
	6/12/2018	Km 110 border of Riau – West Sumatera

Landslides are the displacement of slope-forming material in the form of rock, debris, soil or mixed materials, moving down or off the slope (Iswanto and Raharja, 2009). Landslides can occur due to natural factors and human factors. The Riau and West Sumatra highways have the potential for landslides due to the presence of slopes mined for stone mining by the

Table 2. Parameter A, Geology. General Geology

	Type of Rock Base				Structure Geology			
	Hard	Medium	Soft	Weathered	Few folds or breaks	Medium folds or breaks	Intensive folds or breaks	
Frozen	1	2	3	4	<i>Massive</i>			
Metamorf	1	2	3	4				
Sediment	2	3	4	4				
Type 1								30
Type 2					27	20	13	8
Type 3					24	18	12	7
Type 4					19	15	10	6

Parameters B, Geometry. Effect of discontinuity pattern with respect to direction drive, based on: distance between joints

local community. The main factor for the occurrence of landslides is the geological structure, because the slopes that are mined are considered rock slopes that have a lot of joints and the possibility of slope failure is higher (Putra, D.E.B and Chohanji T, 2016).

3. Methodology

3.1 Research Object

Before conducting the research, a literature study was carried out in the form of a literature study to find out an overview of the geological and geotechnical characteristics of the study area. After that, data collection was carried out in the field in the form of joint data and soil samples on the research slope. The research slope has a length of 48 meters and a height of 10 meters which is divided into four-scanline using the RSR method (Rock Structure Rating) to determine the stability of the slope and 12 meters in the form of slopes that have experienced weathering using the method Atterberg Limitsto determine the classification of soil in the study area.

3.2 Method Analysis Rock Structure Rating (RSR)

In 1972, Wickham presented 3 tables for determining RSR values, namely parameter A (geology), parameter B (geometry) and parameter C (influence of groundwater and joint conditions). The RSR system applies the concept of valuation of each parameter, thus the equation is obtained, namely:

$$RSR = A + B + C$$

Where A is parameter A, B is parameter B and C is parameter C.

Parameters A, Geology. General assessment of geological structure, based on: Type of origin rock (igneous, metamorphic, sedimentary), Rock hardness (hard, medium, soft, weathered), and Geological structure (massive, slightly faulted/folded, moderately faulted/folded, intensely faulted/folded)

In parameter A, what must be done is to determine the type of rock on the slopes such as igneous, metamorphic or sedimentary rocks. After determining the type of rock, then determining the hardness level of the rock which is divided into hard, medium, soft or weathered. From determining the type and hardness of the rock, the values of these parameters are obtained. After determining the type and hardness of the rock, then determining the geological structure found on such slopes massive, slightly faulted/folded, moderately slightly faulted/folded and intensely faulted/folded. If it has been determined, the rating value for the geological structure parameters is obtained. After the rating value for each parameter is obtained, the next step is to add up the rating values, then the rating value for parameter A will be obtained.

(joint spacing), stocky orientation (joint orientation, strike and dip), Tunnel direction (direction of tunnel drive).

In parameter B the first step that must be done is to determine the slope included in strike perpendicular to axis or strike in line with axis. After it can be determined, then calculate the joint distance on the slope. From the two data, a rating on parameter B will be obtained.

At parameter B there are two types of road direction towards the slope or direction of drive, namely A is a type of road that is in the same direction or parallel to the slope, B is a type of road opposite to the slope.

Table 3. Parameter B, Geometry: Joint pattern, Direction *drive*

Average burly distance	Strike towards Axis				Strike Towards axis			
	Movement Direction							
	Both		With Dip		In the contrary with Dip		One of Direction	
	Dip from stout looking ^a				Dip from stout looking			
Flat	Dipping	Vertical	Dipping	Vertical	Flat	Dipping	Vertical	
1. Very close solid < 2 in	9	11	13	10	12	9	9	7
2. Close solid, 2-6 in	13	16	19	15	17	14	14	11
3. Medium solid distance, 6-12 in	23	24	28	19	22	23	23	19
4. Medium until <i>Blocky</i> , 1-2 ft	30	32	36	25	28	30	28	24
5. <i>Blocky</i> until <i>massive</i> , 2-4 ft	36	38	40	33	35	36	24	28
6. <i>Massive</i> , > 4 ft	40	43	45	37	40	40	38	34

^a Dip: flat: 0-20°; dipping: 20-50°; and vertical: 50-90°

Parameter C, Effect of groundwater and joint conditions (joint), based on: Overall rock mass quality based on combined parameters A and B, Good, poor, and very poor joint conditions, Amount of water inflow (in gallons per minute per 1000 tunnel feet)

– 20°, dipping if the dip value is 20° – 50°, and vertical if the dip value is 50° – 90°.

In parameter C, the first step is to determine which slope dip is included in range value 13 – 44 or 45 – 75. The slope dip value can be seen from slope face on that slope. There is a description of the dip value, dip is said flat if the dip value is 0°

After knowing range dip, then determine the flow of water on the inside slope gallons per minutes. Then determine the condition of the joints included in good, medium or bad. After everything is determined, the rating value for parameter C is obtained.

Table 4. Parameter C. Effect of Groundwater Conditions and Joint Conditions

Anticipated water inflow	Total from Parameter A + B					
	13 – 44			45 – 75		
gpm/1000 ft in tunnel	Solid condition ^b					
	Good	Medium	Bad	Good	Medium	Bad
None	22	18	12	25	22	18
Few, < 200 gpm	19	15	9	23	19	14
Medium, 200-1000 gpm	15	22	7	21	16	12
Heavy, > 1000 gpm	10	8	6	18	14	10

^b Firm condition: good = close or cemented; medium = slightly weathered or altered; bad = very outdated, altered or open

After obtaining the values of parameters A, B and C, then these values are added up to get the RSR value. The values obtained are then plotted on the RSR diagram, thus support can be identified (treatment) to be assigned to the slope.

Soil properties are highly dependent on the grain size. The grain size is used as the basis for naming and classifying soil. Therefore, this grain size analysis is a test that is very frequently performed. Soil names and properties are determined or influenced by gradation (for coarse-grained soils) and limits of consistency (for fine-grained soils). Which in this case is called the soil index property. Soil consists of a wide variety of grains with a ratio of the percentage of grain diversity. Can be seen in Table 5.

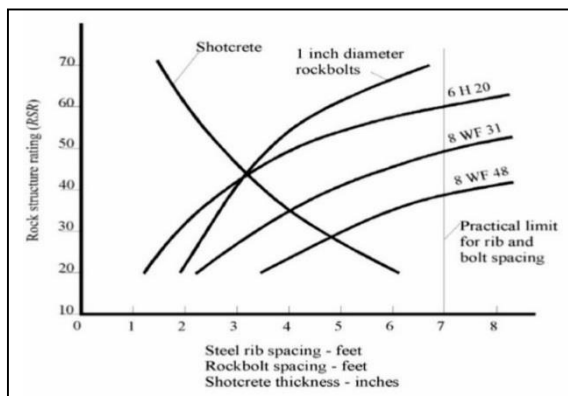


Fig 2. Diagram RSR (Wickham, 1972)

Table 5. Soil Classification Based on Grain Size (Santosa, 1998)

Jenis tanah	Ukuran butir (mm)
Gravel (kerikil)	>2.00
Sand (pasir)	2.00 – 0.06
Silt (lanau)	0.06 – 0.002
Clay (lempung)	<0.002

For distribution of coarse-grained soils, screening can be done. This filtering is technically by passing the soil through a set of filters that have different sizes.

3.3 Atterberg Limits (Boundary – Atterberg Limit)

The Atterberg Limit was created by Albert Atterberg (1911), a Swedish chemist, which was later updated by Arthur Casagrande. Used in basic calculations of fine grained soils. If the fine-grained soil contains clay minerals, then the soil can be kneaded without causing cracks. This cohesive nature is due to the presence of water absorbed around the surface. According to Atterberg, a way to describe the consistency limits of fine-grained soils by considering the soil water content. There are several tests carried out to determine the consistency of the soil, namely:

3.3.1 Liquid Limit

Liquid limit is the water content of the soil which is at the boundary between the liquid state and the plastic state. Liquid limit determination using the Casagrande test equipment. The purpose of the liquid limit analysis is to calculate the liquid limit consistency value.

3.3.2 Plastic Limit

Plastic limit is the water content that is between semi-solid and plastic conditions which is characterized by soil that starts to crack. The plastic limit can be determined by a simple test by rolling a quantity of soil repeatedly thus it is ellipsoidal. The moisture content of the soil sample at which the soil begins to crack is defined as plastic. The purpose of the plastic limit analysis is to calculate the value of the consistency of plasticity and the plasticity index of the soil.

3.3.3 Plasticity Index

Plasticity Index (PI) is the difference between the liquid limit and the plastic limit on the soil. The PI value is indicated by the equation:

$$PI = LL - PL$$

The plasticity index shows the plasticity of the soil, if the PI value is high then the soil contains a lot of clay, and if the PI value is low then the soil contains a lot of silt. The characteristics and properties of silt soil are that with a slightly reduced water content, the soil will become dry. By Atterberg given the limit value of the Plasticity Index with its properties, soil variety and cohesiveness, as follows:

Table 6. Value of Plasticity Index and Soil Variety

PI	Trait	Soil Variation	Cohesive
0	Non Plastic	Sand	Non Cohesive
<7	Low Plasticity	Silt	Cohesive Partly
7-17	Medium Plasticity	Silty Clay	Cohesive
>17	High Plasticity	Clay	Cohesive

4. Result and Discussion

4.1 Slope Conditions

The slope to be studied has many discontinuities which are feared to cause failure. To determine the condition of the slopes, data collection is carried out based on measurements *scanline* which is divided into 4 *scanline*.

4.1.1 Scanline 1

Slope on scanline 1 has a slope length of 12 m and a slope height of 10 m. The lithology is in the form of sandstone on the bottom layer and conglomerate on the top layer. Sandstone with weathered brownish yellow color and fresh whitish yellow color, fine-medium grain size, rounded to moderate angles, good sorting, soft compactness can be crushed. Meanwhile, the conglomerate has a weathered color of yellowish brown and

fresh color of whitish brown, the size of the gravel fragments (1-20cm), the shape of the fragments is rounded, open packaging, the compactness is soft-a bit hard. On scanline it has experienced high weathering, because more than half of the rock has begun to decompose and has a significant discoloration. Discontinuity data on scanline 1 was in the form of joints/fractures, found 50 joints with the average distance between joints being close, the width of the discontinuity fracture being slightly narrow, and the water conditions being moist. In taking discontinuity data, only one layer area is at the retrieval distancescanline. Can be seen in Figure 3.



Fig 3. Measurement Location Scanline 1



Fig 4. Measurement Location Scanline 2

4.1.2 Scanline 2

Slope on scanline 2 has a slope length of 12 m with different slope heights, on the left the slope has a height of about 10 m, the middle is 5 m and the right is 8 m. The lithology is in the form of sandstone on the bottom layer and conglomerate on the top layer. Sandstone with brownish-yellow weathered color and blackish-gray fresh color, fine-medium grain size, rounded, well-sorted, hard compact. Meanwhile, conglomerate has a yellowish brown weathered color and whitish brown fresh color, the size of the fragments is cobble-stoned, the shape of the fragments is rounded, half-rounded, open packaging, hard compactness. On scanline 2 experienced mild weathering, because the rock experienced discoloration on the damaged aggregate or on the surface of the discontinuity plane. Discontinuity data on scanline 2 in the form of joints/fractures, found 70 joints with an average spacing between joints being moderate, the width of the discontinuity fracture being slightly narrow, and wet water conditions. In taking discontinuity data, only one layer area is at the retrieval distancescanline. Can be seen in Figure 4.

4.1.3 Scanline 3

Slope on scanline 3 has a slope length of 12 m and a slope height of 8 m. The lithology is in the form of sandstone on the bottom layer and conglomerate on the top layer. Sandstone with brownish-yellow weathered color and blackish-gray fresh color, fine-medium grain size, rounded, well-sorted, hard compact. Meanwhile, the conglomerate has a weathered color of yellowish brown and fresh color of whitish brown, the size of the gravel-barky fragments, the shape of the fragments is rounded, open packaging, the compactness is rather loud. On scanline 3 experienced light weathering. Discontinuity data on scanline 3 in the form of joints/fractures, found 80 joints with an average spacing between joints being moderate, the width of the discontinuity fracture being slightly narrow, and wet water conditions. In taking discontinuity data, only one layer area is at the retrieval distance scanline. Can be seen in Figure 5.



Fig 5. Measurement Location Scanline 3



Fig 6. Measurement Location Scanline 4

4.1.4 Scanline 4

Slope on scanline 4 has a slope length of 12 m and a slope height of 8 m. The lithology is in the form of sandstone on the bottom layer and conglomerate on the top layer. Sandstone with brownish-yellow weathered color and blackish-gray fresh color, fine-medium grain size, rounded, well-sorted, hard compact. Meanwhile, the conglomerate has a weathered color of yellowish brown and fresh color of whitish brown, the size of the gravel-barky fragments, the shape of the fragments is rounded, open packaging, the compactness is rather loud. Discontinuity data on scanline 4 in the form of joints/fractures, found 70 joints with the average distance between joints being close, the width of the discontinuity fracture being slightly narrow and the water conditions being moist. Scanline 3 experiences mild weathering, because the rock changes color on the damaged aggregate or discontinuity surface. In taking discontinuity data, only one layer area is at the retrieval distance scanline. Can be seen in Figure 6.

4.2 Degree of Slope Weathering

Slope weathering levels are grouped based on slope conditions in the field, then compared with weathering levels based on ISRM 1981 in Bienawski, 1989.

The research slope is divided into 4 levels of weathering, namely:

1. Weathering level II (Lightly Weathered): Sandstones on slopes that have weathering level II are characterized by changes in the color of the rock material in the field, fractures are covered with flow fill material in the form of clay which is not yet significant, there are no sand grains on the slopes, only color changes occur.
2. Weathering level III (Moderate Weathered): Conglomerates on slopes that have weathering level III are characterized by a contrasting color change in the rock material, it has begun to decompose or some of the slopes contain sand, but still less than 35% or not all of the rock material.
3. Weathering level IV (High Weathered): Sandstones and conglomerates on slopes that have weathering level IV are characterized by contrasting color changes and there is already a lot of sand or highly decomposed material, more than 35% of the conditions in the area have changed to soil and the samples have been can be picked up and squeezed by hand.
4. Weathering level V (Perfectly Weathered): Sandstones and conglomerates on slopes that have weathering level V are characterized by all material having been decomposed into soil, but the original mass structure is partially intact and some of the sides of the slope have experienced landslides.



Fig 7. Overall Research

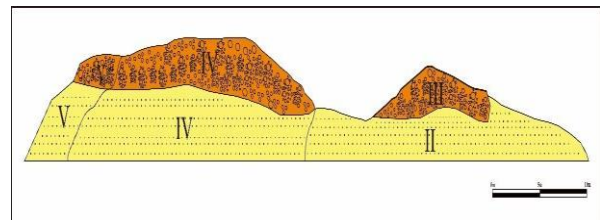


Fig 8. Sketch of Research Slope Weathering Rate



Fig 9. Soil Sampling Research Slope

4.3 Sieve Analysis

Research slopes that experience high weathering thus some of the rock material has become soil is used as a sample used to carry out sieve analysis (sieve analysis). The research slope is

15 meters long and 10 meters high. The soil sample used for sieve analysis was divided into two parts, namely the upper and lower parts. Can be seen in Figure 9.

4.3.1 Sieve Analysis Test of Soil Samples at the Bottom

The results of the soil samples that have been tested for sieve analysis based on the sieve number are entered in the table. Can be seen in Table 7.

Table 7. Data from the Analysis of the Soil Sample Sieve at the Bottom

Sieve Number	Sieve Size (mm)	Restrained Weight Wn (gr)	Percentage Wn Rn = Wn / Wt	Cumulative Percentage $\sum Rn$ (100%)	% Finer 100 - $\sum Rn$ (%)
8	2.3	4.43	2.967	2.967	97.033
16	1.1	21.22	14.214	17.181	82.819
30	0.6	28.11	18.830	36.081	63.919
50	0.3	15.49	10.376	46.387	53.613
100	0.1	47.58	31.872	78.259	21.741
200	0.075	29.49	19.754	98.013	1.969
Pan	Pan	2.96	1.982	100	0
Total		149.28	100		

After obtaining the values from the sieve analysis results in Table 7, then these values are plotted into the sieve analysis diagram Figure 10 to determine the grain distribution of the soil sample. The values plotted into the sieve analysis diagram are the % Finer values and the sieve size.

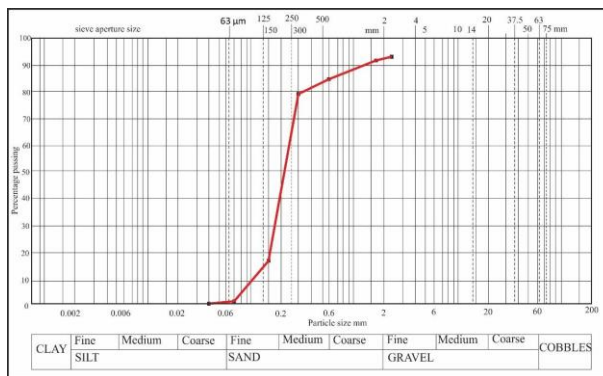


Fig 10. Graph of Soil Sample Sieve Analysis at the Bottom

Table 7. Calculation results based on the sieve analysis graph

Cu	Cz	So	Uniformity	Gradation	Sorting
4.5	0.66	2.68	Uniform	Bad	Medium

Based on the graph in (Figure 10) it can be concluded that in the soil samples at the bottom of the slope, the grain size distribution from the smallest silt to the largest grain size is coarse sand and the value Cu = 4.4 means the soil grains are uniform, the value Cz = 0.66 means the soil is poorly graded. Poorly graded soils are soils that have a grain size that is not evenly distributed from large to small grain sizes. And the value of So = 2.68 means moderate sorting with non-uniform grain sizes.

4.3.2 Sieve Analysis Test of Soil Samples at the Bottom

The results of the soil samples that have been tested for sieve analysis based on the sieve number are entered in the table. Can be seen in Table 8.

Table 8. Data from the Analysis of the Upper Soil Sample Sieve

Sieve Number	Sieve Size (mm)	Restrained Weight Wn (gr)	Percentage Wn Rn = Wn / Wt	Cumulative Percentage $\sum Rn$ (100%)	% Finer 100 - $\sum Rn$ (%)
--------------	-----------------	---------------------------	----------------------------	--	-----------------------------

r	Size (mm)	Wn (gr)	Rn = Wn / Wt	Percentage $\sum Rn$ (100%)	$\sum Rn$ (%)
8	2.3	7.79	5.227	5.227	94.773
16	1.1	4.05	2.717	7.944	92.056
30	0.6	9.03	6.059	14.003	85.997
50	0.3	9.8	6.575	20.578	79.422
100	0.1	90.53	60.746	81.324	18.676
200	0.075	26.93	18.070	99.394	0.606
Pan	Pan	0.9	0.603	100	0
Total		149.03	100		

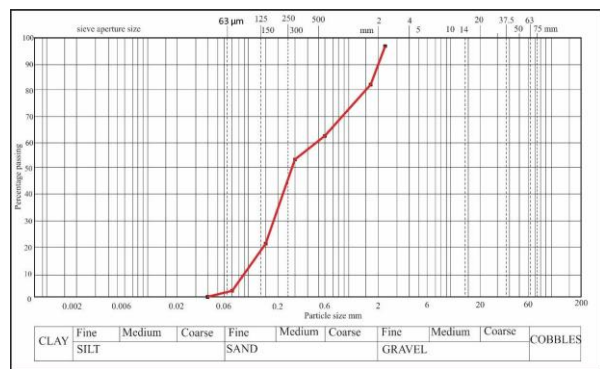


Fig 11. Graph of Soil Sample Sieve Analysis at the Top

Table 9. Calculation Results Based on the Sieve Analysis Graph

Cu	Cz	So	Uniformity	Gradation	Sorting
2.3	1.3	1.28	Uniform	Bad	Good

After obtaining the values from the sieve analysis results in Table 7, then these values are plotted into the sieve analysis diagram in Figure 11 to determine the grain distribution of the soil sample. The values plotted in the sieve analysis diagram are the % Finer values and the sieve size.

Based on the graph in Figure 11, it can be concluded that in the soil samples at the top of the slope, the grain size distribution from the smallest silt to the largest grain size is coarse sand and the value Cu = 2.3 means the soil grains are uniform, the value Cz = 1.3 means the soil is poorly graded. Poorly graded soils are soils that have a grain size that is not evenly distributed from large to small grain sizes. And the value of So = 1.28 means good sorting or sorting with uniform grain sizes.

Based on the results of the sieve analysis it can be concluded, namely as follows:

Table 9. Overall Calculation Results of the Research Soil Samples

Part	Cu	Cz	So	Uniformity	Gradation	Sorting
Above	2.3	1.3	1.28	Uniform	Bad	Good
Below	4.5	0.66	2.68	Uniform	Bad	Medium

From the calculation results it was found that the bottom soil sample had uniform grain uniformity with poor gradation and moderate sorting, medium grain size and little gravel. Whereas at the top it has uniform grain uniformity with poor

gradation and good sorting, fine-medium grain size and little gravel.

4.4 Analysis Atterberg Limits (Boundary – Atterberg Limit)

Analysis *Atterberg Limits* namely analyzing soil samples on slopes that have experienced high weathering. In this analysis, the object of research is a soil sample which is divided into 2 parts, namely the bottom and top. Can be seen on **Figure 4.7**.

4.4.1 Test *Liquid Limit* (Liquid Limit)

The following is an analysis of the liquid limit test in the laboratory, which is as follows:

a. Test *Liquid Limit* Lower Soil Samples

On testing *liquid limit* (liquid limit) experiment was carried out 3 times with different water levels. The result of the calculation *liquid limit* can be seen in Table 10.

Table 10. Calculation Result Data *Liquid Limit* Soil Samples at the Bottom

No	Description (gr)	I	II	III
A	Cup Number	1	2	3
B	Number of Hit	80	50	20
C	Cup Weight	31.03	31.03	31.03
D	Cup Weight + Wet Sample	100.77	91.02	84.75
E	Cup Weight + Dry Sample	81.9	74.6	68.96
F	Water Weight (D – E)	18.87	16.42	15.79
G	Dry Example Weight (E– C)	50.87	43.57	37.93
H	Water Content (F/G x 100%)	59.09	57.68	55.62
I	Liquid Limit (%)	57.4%		

On the test liquid limit Experiments were carried out 3 times with different water content. Experiment 1 was carried out with a slightly lower water content than the test results liquid limit is 59.09% and takes 80 strokes. Experiment 2 was carried out with the water content being the result of the test liquid limit its 57.68% and takes 50 hits. And experiment 3 was carried out with a lot of water content test results liquid limit its 55.62% takes 20 strokes. From the results of the three test trials liquid limit in the lower soil sample produces a liquid limit value of 57.4%.

After obtaining the calculated value liquid limit, then the data on the number of blows and groundwater content is plotted onto the graph. Can be seen in Figure.

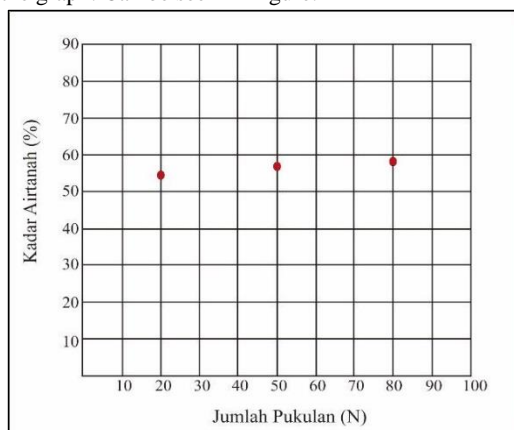


Figure 11. Test Graph *Liquid Limit* Soil Samples at the Bottom

a. Test *Liquid Limit* Top Soil Samples

On testing *liquid limit* (liquid limit) experiment was carried out 3 times with different water levels. The result of the calculation *liquid limit* can be seen in Table 11.

Table 11. Calculation Result Data *Liquid Limit* Soil Samples at the Top

No	Description (gr)	I	II	III
A	Cup Number	1	2	3
B	Number of Hit	92	60	25
C	Cup Weight	31.03	31.03	31.03
D	Cup Weight + Wet Sample	91.90	87.35	86.34
E	Cup Weight + Dry Sample	82.35	79.80	76.85
F	Water Weight (D – E)	9.55	7.55	9.49
G	Dry Example Weight (E– C)	51.32	48.77	45.82
H	Water Content (F/G x 100%)	58.86	55.48	50.71
I	Liquid Limit (%)	55.01 %		

On the test liquid limit Experiments were carried out 3 times with different water content. Experiment 1 was carried out with a slightly lower water content than the test results liquid limit its 58.86% takes 92 strokes. Experiment 2 was carried out with the water content being the result of the test liquid limit its 55.48% and takes 60 strokes. And experiment 3 was carried out with a lot of water content test results liquid limit its 50.71% takes 25 strokes. From the results of the three test trials, the liquid limit in the bottom soil sample produces a liquid limit value of 55.01%.

After obtaining the calculated value liquid limit, then the data on the number of blows and groundwater content is plotted onto the graph. Can be seen in Figure 12.

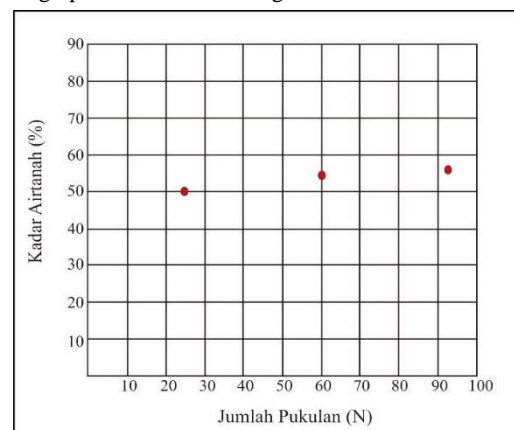


Figure 11. Test Graph *Liquid Limit* Soil Samples at the Bottom

The conclusion from the liquid limit test of 2 soil samples obtained different values. The lower slope has a value of 38.8% and the upper slope has a value of 15.01%. From the results of the analysis, it is because the different water content causes each experiment to have a different number of strokes, the less water content in the sample, the greater the number of strokes. Meanwhile, the more water content in the sample, the less the number of blows.

4.4.2 Test *Plastic Limit* (plastic limit)

The following is an analysis of the liquid limit test in the laboratory, which is as follows:

a. Test *plastic Limit* Lower Soil Samples

On testing *limited plastic* This experiment was carried out 3 times with different water content. The result of the calculation *liquid limit* can be seen in Table 11.

Table 11. Calculation Result Data *limited plastic* Soil Samples at the Bottom

No	Description (gr)	I	II	III
A	Cup Number	1	2	3
B	Cup Weight	31.03	31.03	31.03
C	Cup Weight + Wet Sample	40.38	47.87	40.81
D	Cup Weight + Dry Sample	38.17	45.75	38.45
E	Water Weight (C – D)	2.21	2.12	2.36
F	Dry Example Weight (D – E)	35.96	43.63	36.09
G	Water Content (E / F) x 100%	6.14	4.85	6.53
H	Plastic Limit (%)	1	2	3
I	Cup Number		5.84	

In the plastic limit test, 3 experiments were carried out. Experiment 1 was carried out with a low water content, the plastic limit test result was 6.14%. Experiment 2 was carried out with moderate water content, the result of which was the plastic limit test, which was 4.85%. And experiment 3 was carried out with a lot of water content, the plastic limit test results were 6.53%. From the results of the three plastic limit tests on the lower soil samples, the plastic limit value was 5.84%.

a. Test plastic Limit Top Soil Samples

On testing *limited plastic* This experiment was carried out 3 times with different water content. The result of the calculation *liquid limit* can be seen in Table 12.

Table 12. Calculation Result Data *limited plastic* Soil Samples at the Top

No	Description (gr)	I	II	III
A	Cup Number	1	2	3
B	Cup Weight	31.03	31.03	31.03
C	Cup Weight + Wet Sample	46.85	47.70	40.34
D	Cup Weight + Dry Sample	45.68	46.19	36.88
E	Water Weight (C – D)	1.17	1.51	3.46
F	Dry Example Weight (D – E)	44.51	44.68	33.42
G	Water Content (E / F) x 100%	2.62	3.37	10.35
H	Plastic Limit (%)	1	2	3
I	Cup Number		5.44	

In the plastic limit test, 3 experiments were carried out. Experiment 1 was carried out with a low water content, the plastic limit test result was 2.62%. Experiment 2 was carried out with moderate water content, the result of which was the plastic limit test, which was 3.37%. And experiment 3 was carried out with a lot of water content, the plastic limit test results were 10.35%. From the results of the three plastic limit tests on the lower soil samples, the plastic limit value was 5.44%.

The conclusion from the results of the plastic limit test (plastic limit) of the 2 soil samples obtained different values. The lower slope has a value of 5.84% and the upper slope has a value of 5.44% (Table 4.9). From the results of the analysis, it was due to the different water content causing each experiment to have a different level of plasticity. If the less water content in the sample, the plasticity level is low, while the more water content in the sample, the plasticity level is high.

4.4.3 Test Plasticity Index (Plasticity Index)

After obtaining the liquid limit and plastic limit values, then calculations are carried out to find the plasticity index value and the value is plotted onto the graph

Plasticity Index Soil Samples at the Bottom

$$PI = LL - PL$$

$$PI = 57.4\% - 5.84\%$$

$$PI = 51.56\%$$

Plasticity Index Upper Soil Samples

$$PI = LL - PL$$

$$PI = 55.01\% - 5.44\%$$

$$PI = 49.57\%$$

Then the results of calculating the plasticity index are plotted onto a graph (Figure 12), to find out the classification of the soil in the study area.

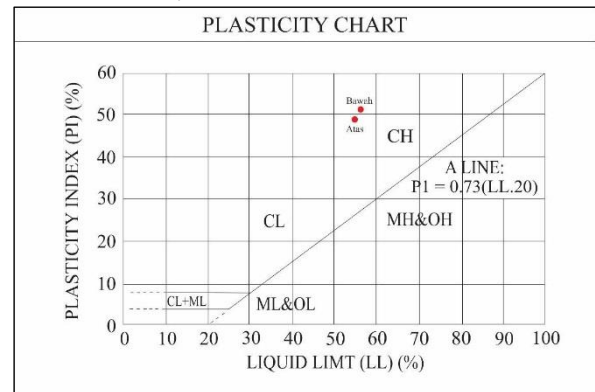


Fig 12. Graph *Plasticity Index* of Soil Samples

Based on the results of the Atterberg Limit analysis, soil samples were obtained from two parts of the lower and upper slopes, namely CH (Clay High Plasticity), an inorganic clay with high plasticity. From the sample analysis, it is known that clay with high plasticity can result in slope failure or landslides because clay is capable of absorbing/storing water but cannot allow water to pass through. With the condition of high water content, the strength of the soil is getting worse, which triggers landslides. The purpose of high plasticity soil is soil that has high swelling and shrinkage of the soil, thus if the range of water content in the soil is higher, the strength of the soil will be low or poor.

4.5 Method analysis of Rock Structure Rating (RSR)

RSR, the research slope was divided into 3 parts due to the different slope conditions and *treatment* or the resulting support is different as well.



Fig 13. RSR Research Slope Part 1

4.5.1 Slope Section 1

The slope of part 1 in the analysis of the RSR method has a slope length of 15 meters and a slope height of 10 meters. Has a high level of weathering with sandstone and conglomerate lithology. In parameter A, it is known that the type of rock is weathered sediment with type 4 and there is a geological structure in this study, namely intensive folding or fracture with a rating of 6 (Table 2).

Then in parameter B it is known that the strike is perpendicular to the axis with the direction of movement with

dip known from direct field observations, then the slope face on the slope has a value of 75° which is included in the vertical table, the distance between joints is very close < 2 in, this is known from the measurement of the distance between joints using measuring tools in the field with a rating of 13. Can be seen in Table 3. Then in parameter C by looking at the water conditions on the research slope, where the research slope in section 1 is included in the no water category and the joint conditions are in the moderate category with a rating of 18. Can be seen in Table 4.

After parameters A, B and C are known, they are then summed up by entering into Table 13.

Table 13. Research Slope RSR Values Part 1

Parameter	Condition	Rating
A	Intensive folds or breaks	6
B	Close solid distance	19
C	No water, Condition medium solid	18
Total A + B + C		43

The RSR value on slope part 1 is 43. Then this value is plotted on the RSR graph. It can be seen on the graph treatment or support on the slope part 1, namely giving rockbolts and shotcrete. Rockbolts used in the Rock Structure Rating (RSR) method that is 1 inch in diameter, with a space between rock bolts which is 3.1 feet. Then spraying shotcrete on slopes with a thickness of 3.3 inches. Can be seen in Figure 13.

4.5.2 Slope Part 2

The slope of section 2 in the analysis of the RSR method has a slope length of 6 meters and a slope height of 4 meters. Has a mild weathering level with sandstone lithology and conglomerate Slope part 2 can be seen in Figure 13.

In parameter A, it is known that the type of rock is hard sediment with type 2 and there is a geological structure in this study, namely intensive folding or fracture with a rating of 8 (table 2)..

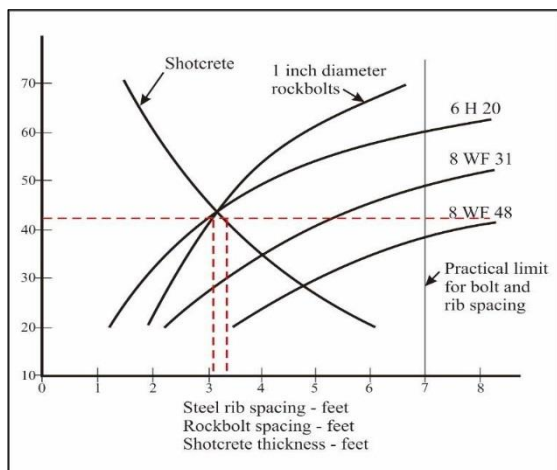


Figure 13. RSR Research Slope Part 2

Then the parameter B is known to strike perpendicular to the axis with the direction of movement with dip known from direct observation in the field, the slope face on the slope has a value of 75° which is included in the vertical table, and the distance between joints is close to 2-6 in, this is known from measuring the distance between joints using a measuring instrument in the field with rating 19. Can be seen in Table 3.

Then in parameter C by looking at the water conditions on the research slope, where the research slope in part 1 is included in the moderate water condition category and the joint condition is in the medium category with a rating of 22. Can be seen in Table 4.

After parameters A, B, and C are known, they are then summed up by entering Table 14.

Table 14. Research Slope RSR Values Part 2

Parameter	Condition	Rating
A	Intensive folds or breaks	8
B	Close solid distance	19
C	No water, Condition medium solid	22
Total A + B + C		49

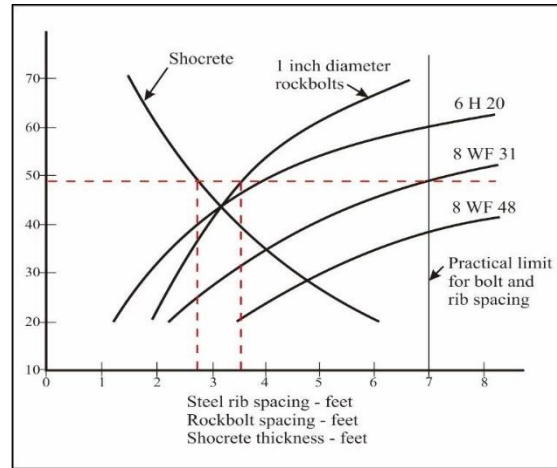


Figure 14. Slope RSR Graph Part 2

4.5.3 Slope Part 3

The slope of section 3 in the analysis of the RSR method has a slope length of 27 meters studied and a slope height of 8 meters. Has a mild weathering level with sandstone and conglomerate lithology can be seen in Figure 15.

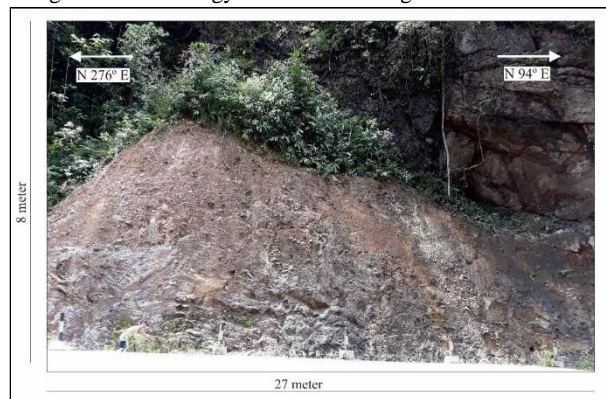


Figure 15. RSR Research Slope Part 3

In parameter A, it is known that the type of rock is hard sediment with type 2 and there is a geological structure in this study, namely intensive folding or fracture with a rating of 8 can be seen in the table 2.

Then the parameter B is known to strike perpendicular to the axis with the direction of movement with dip known from direct observation in the field, the slope face on the slope has a value of 75° which is included in the vertical table, and the distance between joints is close to 2-6 in, this is known from measuring the distance between joints using a measuring instrument in the field with rating 19. Can be seen in Table 3.

Then in parameter C by looking at the water conditions on the research slope, where the research slope in section 3 is included in the slight water condition category and the joint condition is in the medium category with a rating of 15. Can be seen in Table 4.

After parameters A, B, and C are known, they are then summed up by entering Table 14.

After parameters A, B and C are known, they are then summed up by entering into Table 14.

Table 14. Research Slope RSR Values Part 2

Parameter	Condition	Rating
A	Intensive folds or breaks	8
B	Close solid distance	28
C	No water, Condition medium solid	15
Total A + B + C		51

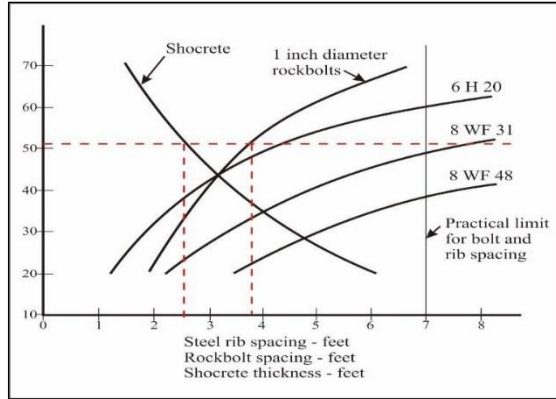


Fig 16. Slope RSR Graph Part 3

The rating for each parameter is added up and the RSR value is obtained, the RSR value on slope part 3 is 51. Then this value is plotted on the RSR graph. It can be seen on the graph treatment or support on the slope of section 3, namely giving rockbolts and shotcrete. Rockbolts used in the Rock Structure Rating (RSR) method that is 1 inch in diameter, with a space between rock bolts which is 3.8 feet. Then spraying the shotcrete on the slope with a thickness of 2.6 inches. Can be seen in Figure 16.

4.6 Preferences and Mitigation on Research Slopes

On the research slope of choice *treatment* or support that can be done based on the *Rock Structure Rating* (RSR) method which is divided into three parts based on slope conditions and the calculation of the RSR value discussed earlier, which are as follows:

4.6.1 Slope Section 1

Part 1 of the slope is 15 m long and 10 m high with high weathering conditions. Based on the RSR value obtained, it is known treatment that can be done is planting rockbolts with spacing rockbolts 3.1 feet than in terms of horizontal totaling 16 rockbolts in one line, whereas in vertical totaling 1 rockbolts in one line (figure. 17). Then spraying shotcrete on a slope with a thickness of 3.3 inches or 83.8 mm (Figure 18).

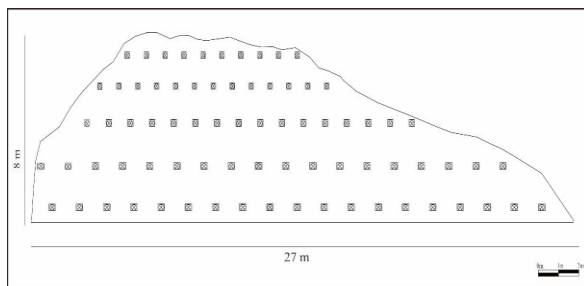


Fig 17. Sketch illustration *Rock shop* 1 inch in diameter 3.1 feet apart on slope section 1

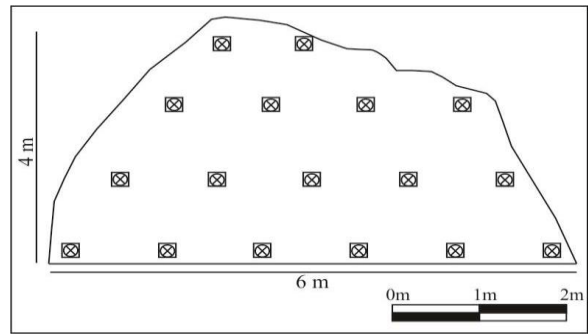


Fig 18. Sketch illustration *Shotcrete* with a Thickness of 3.3 inches On Slope Section 1

4.6.2 Slope Section 2

Section 2 slope has a length of 6 m and a height of 4 m with mild weathering conditions. Based on the RSR value obtained, it is known that the treatment that can be carried out is planting rockbolts with a distance of 3.5 feet between the rockbolts, thus horizontally there are 6 rockbolts in one row, while vertically there are 4 rockbolts in one row (Figure 19). Then spraying the shotcrete on a slope with a thickness of 2.7 inches or 68.5 mm (Figure 20).

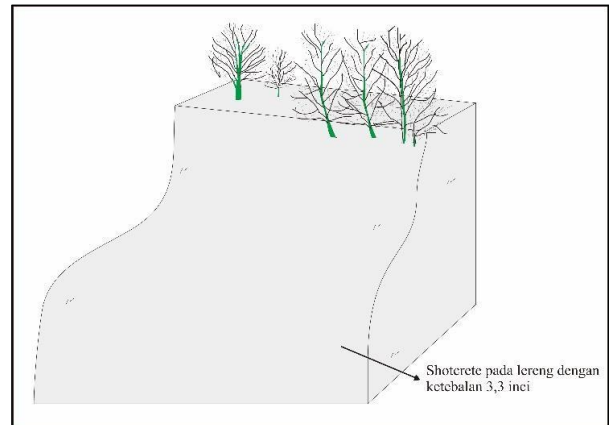


Fig 19. Sketch illustration *Rock shop* 1 Inch Diameter 3.5 ft Spacing On Section 2 Slope

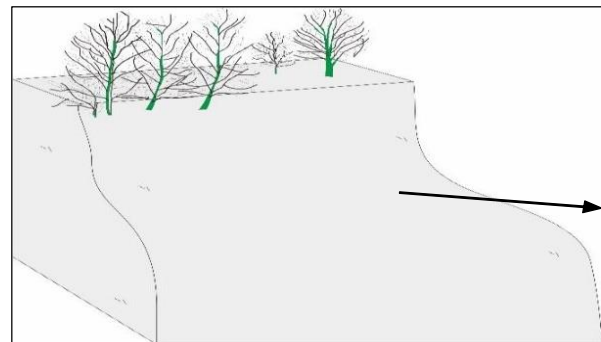


Fig 20. Sketch illustration *Shotcrete* with a Thickness of 2.7 inches On Section 2 Slope

4.6.3 Slope Section 3

Section 3 slope has a length of 27 m and a height of 8 m with mild weathering conditions. Based on the RSR value obtained, it is known that the treatment that can be carried out is planting rock bolts on the slope of section 3 with a distance between rock bolts of 3.8 feet, thus horizontally there are 19 rock bolts in one row, while vertically there are 5 rock bolts in

one row (Figure 21). Then spraying the shotcrete on the slope with a thickness of 2.6 inches or 66 mm (Figure 22).

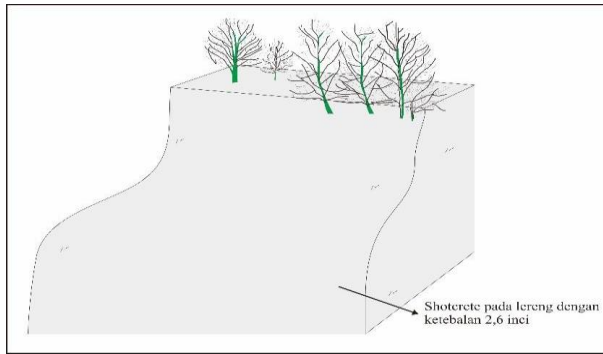


Fig 21. Sketch illustration Rock shop 1 Inch Diameter 3.8 Feet Spacing On Section 3 Slopes

The condition of the research slope on the left side of the slope has experienced landslides. In the landslide section, it can be seen that the rocks on the inside of the slope have experienced weathering and tend to move toward the soil. Mitigation that can be given to the slopes that have experienced landslides is different from the rock slope conditions studied. One example of mitigation given to slopes that have experienced landslides is the construction of rock embankments to resist landslides. Can be seen in Figure 22.



Fig 22. Landslide Mitigation with Retaining Rock Embankments

5. Conclusion

Based on the results of the data analysis that has been carried out in this study, the following conclusions can be drawn:

In the study area, the slope is divided into four-scanline which have special characteristics in each scanline. The four scanlines, it is divided into 1 part of the slope which has high weathering in the form of soil samples using analysis Atterberg Limits, and 3 sections of the slope using the Rock Structure Rating (RSR).

The final result of the analysis Atterberg Limit obtained the value of the soil sample at the bottom of the slope with a plasticity index value of 51.56% and the top of the slope is 49.57%. The two parts of the soil on the slope are CH (Clay with High Plasticity), and inorganic clay with high plasticity.

In an analysis of rock Structure Rating (RSR), the slope is divided into three parts due to different slope conditions. Section 1 slope is 15 m long and 10 m high. Treatment that can be done is planting rockbolts on the slope of section 1 with the distance between rock bolts of 3.1 feet in terms of horizontal totaling 16 rockbolts in one line, whereas vertical totaling

1 rockbolts in one line. And also spraying shotcrete with a thickness of 3.3 inches.

Section 2 slope is 6 m long and 4 m high. Treatment that can be done is planting rockbolts on the slope section 2 with the distance between rock bolts 3.5 feet then horizontal amounting to 6 rockbolts in one line, whereas vertical amounting to 4 rockbolts in one line. And spraying shotcrete with a thickness of 2.7 inches.

Section 3 of the slope is 27 m long and 8 m high. Planting rockbolts on the slope section 3 with the distance between rock bolts 3.8 feet than in terms of horizontal totaling 19 rockbolts in one line, whereas in vertical amounting to 5 rockbolts in one line. And spraying shotcrete with a thickness of 2.6 inches.

Another mitigation that can be carried out from the research slope is the construction of rock embankments to resist landslides on slopes that have experienced high weathering or have become soil.

References

- Atteberg, A. (1911), *Uber Die Physikalische Bodenuntersuchung Und Uber Die Plastizität der Tone*, Int. Mitt. Boden, Vol. 1.
- Bieniawski, Z. T., 1989. Engineering Rock Mass Classification. Mining and Mineral Resources Research Institute. The Pennsylvania State University.
- Bowles, E.J. 1989. *Trait-Trait Fisis dan Geoteknik Tanah*. PT. Erlangga. Jakarta.
- Casagrande, A. (1948), *Classification and Identifications to Soil Mechanics*, ASCE
- Choanji, T. (2016). Slope Analysis Based On SRTM Digital Elevation Model Data: Study Case On Rokan IV Koto Area And Surrounding. *Journal of Dynamics*, 1(2), 71–75.
- Choanji, T., Yuskar, Y., Putra, D. B. E., Cahyaningsih, C., & Sakti, W. (2018). Clustering Slope Stability from Using Drone DEM Lineament Extraction And Rock Mass Rating In Pangkalan Koto Baru, West Sumatra, Indonesia. *Journal of Applied Geospatial Information (JAGI)*, 2(2), 124–129.
- Das, B.M. 1995. *Mekanika Tanah (Prinsip-Prinsip Rekayasa Geoteknis)*. Jilid I. Terjemahan Erlangga, Jakarta.
- Hardiyatmo, H.C. *Mekanika Tanah I*. Jakarta: PT. Gramedia Pustaka Umum. 1992
- Irfan, T.Y dan Dearman, W.R., 1978. Engineering classification and index properties of a weathered granite. *Bull. Int. Assoc. Eng. Geol.*, 17: 79-90.
- ISRM, 1981. Commission on classification of rock and rock masses, Basic geotechnical description of rock masses. *Int. J. Rock Mech. Min. Sci. Geomech. Abstr.*, 18: 85-110
- Iswanto & Raharja. 2009. Sistem Peringatan Dini Tanah Landslide Berbasis ATMEGA8535. *Jurnal Informatika*. Yogyakarta.
- Kausarian, H., Shamsudin, A. R., & Yuskar, Y. (2014). Geotechnical and Rock Mass Characterization Using Seismic Refraction Method at Kajang Rock Quarry, Semenyih, Selangor Darul Ehsan. *And Authors Pages*, 13, 12.
- Korach, T & Sarajar, A.N. 2014. Analisis Kestabilan Lereng dengan Metode Jambu (Studi Kasus: Kawasan Citraland). *Jurnal Sipil Statik*. Vol 2/No. 1, (22-28) ISSN: 2337-6732, Januari 2014
- Putra, D. B. E., & Choanji, T. 2016. Preliminary Analysis of Slope Stability in Kuokand Surrounding Areas. *Journal of Geoscience, Engineering, Environment, and Technology*, 1(1), 41–44.
- Putra, D. B. E., Yuskar, Y., Cahyaningsih, C., & Khairani, S. (2017). ROCK MASS CLASSIFICATION SYSTEM

USING ROCK MASS RATING (RMR) OF A CUT SLOPE IN RIAU–WEST SUMATRA ROAD. *PROCEEDNG ICoSET*, 8, 106.

- Santosa, Budi dkk. 1998. *Dasar Mekanika Tanah*. Penerbit Gunadarma.
- Silitonga P.H. & Kastowo, 1995: *Peta Geologi Lembar Solok, Sumatera, Peta Geologi bersistem Sumtera*, PPPG, Bandung.
- Sustriani, Yunita. 2012. Pengaruh Struktur Kekar Terhadap Kestabilan Lefreng Dinding Bagian Barat Daya dan Timur Laut Pada Desain Fase 6 Tambang BatuHijau PT Newmont Nusa Tenggara.
- Wickham, G.E.; Tiedemann, H.R.; Skinner, E.H. (1972). "Support determination based on geologic predictions". In Lane, K.S.; Garfield, L.A. (eds.). Proc. 1stNorth

American Rapid Excavation & Tunnelling Conference (RETC), Chicago. 1. American Institute of Mining, Metallurgical and Petroleum Engineers (AIME), New York. pp. 43–64.

- Wickham, G.E.; Tiedemann, H.R.; Skinner, E.H. (1974). "Ground support prediction model - RSR concept". Proc. 2nd North American Rapid Excavation & Tunnelling Conference (RETC), San Francisco. 1. American Institute of Mining, Metallurgical and Petroleum Engineers (AIME), New York. pp. 691–707



© 2023 Journal of Geoscience, Engineering, Environment and Technology. All rights reserved. This is an open access article distributed under the terms of the CC BY-SA License (<http://creativecommons.org/licenses/by-sa/4.0/>).